

Supplementary material

Objective Evaluation of Earth System Models: PCMDI Metrics Package (PMP) version 3

Jiwoo Lee¹, Peter J. Gleckler¹, Min-Seop Ahn^{2,3}, Ana Ordonez¹, Paul A. Ullrich^{1,4}, Kenneth R. Sperber^{1,a}, Karl E. Taylor¹, Yann Y. Planton^{5,6}, Eric Guilyardi^{7,8}, Paul Durack¹, Celine Bonfils¹, Mark D. Zelinka¹, Li-Wei Chao¹, Bo Dong¹, Charles Doutriaux¹, Chengzhu Zhang¹, Tom Vo¹, Jason Boutte¹, Michael F. Wehner⁹, Angeline G. Pendergrass^{10,11}, Daehyun Kim¹², Zeyu Xue¹³, Andrew T. Wittenberg¹⁴, and John Krasting¹⁴

¹ Lawrence Livermore National Laboratory, Livermore, California, USA

² NASA Goddard Space Flight Center, Greenbelt, MD, USA

³ ESSIC, University of Maryland, College Park, MD, USA

⁴ University of California, Davis, Davis, California, USA

⁵ NOAA Pacific Marine Environmental Laboratory, Seattle, Washington, USA

⁶ Monash University, Clayton, Australia

⁷ LOCEAN-IPSL, CNRS-IRD-MNHN-Sorbonne Université, Paris, France

⁸ National Centre for Atmospheric Science-Climates, University of Reading, Reading, UK

⁹ Lawrence Berkeley National Laboratory, Berkeley, California, USA

¹⁰ Department of Earth and Atmospheric Science, Cornell University, Ithaca, New York, USA

¹¹ National Center for Atmospheric Research, Boulder, Colorado, USA

¹² School of Earth and Environmental Sciences, Seoul National University, Seoul, South Korea

¹³ Pacific Northwest National Laboratory, Richland, WA, USA

¹⁴ NOAA Geophysical Fluid Dynamics Laboratory, Princeton, NJ, USA

^a Retired

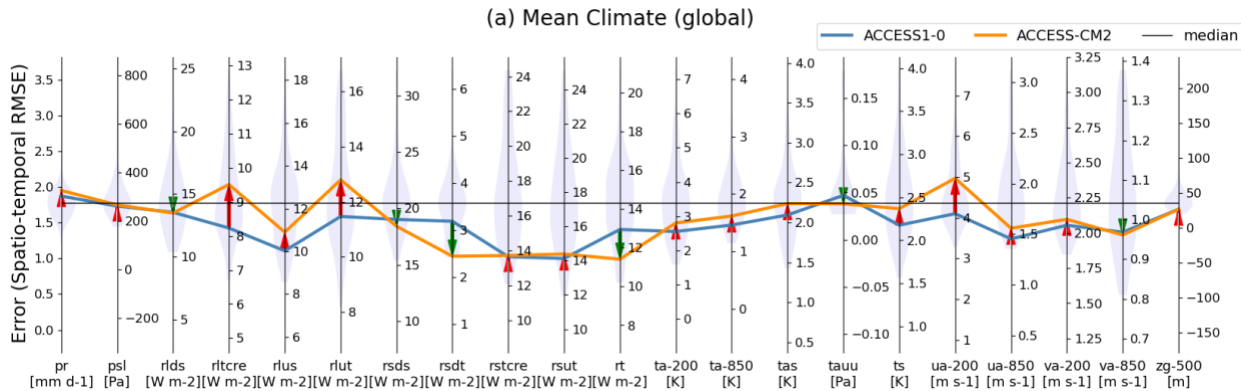
Submitted to [Geoscientific Model Development \(GMD\)](#)

(November 2023)

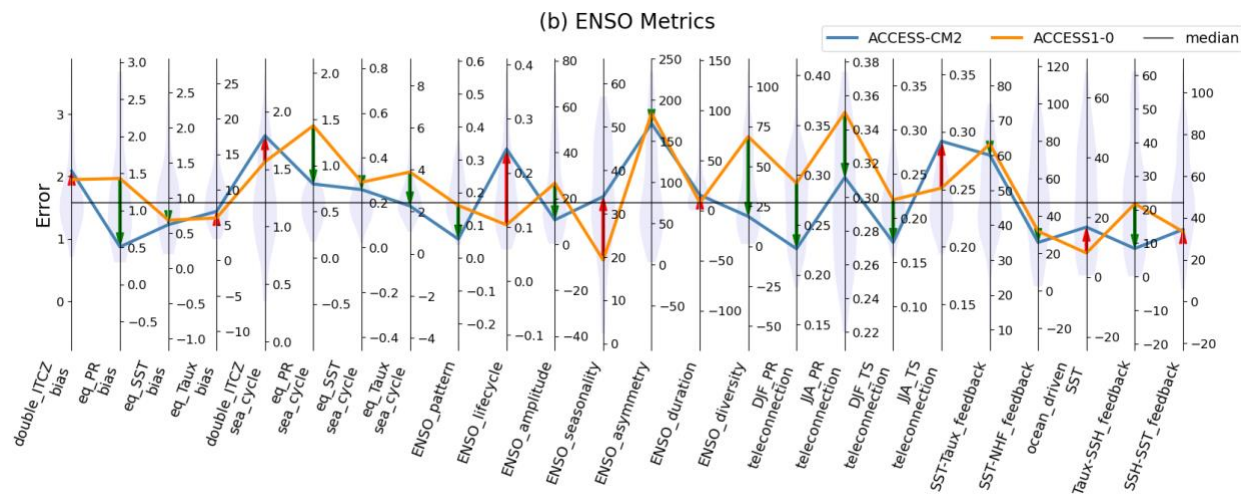
Corresponding to: Jiwoo Lee (lee1043@llnl.gov)

7000 East Ave, Livermore, California 94550, USA

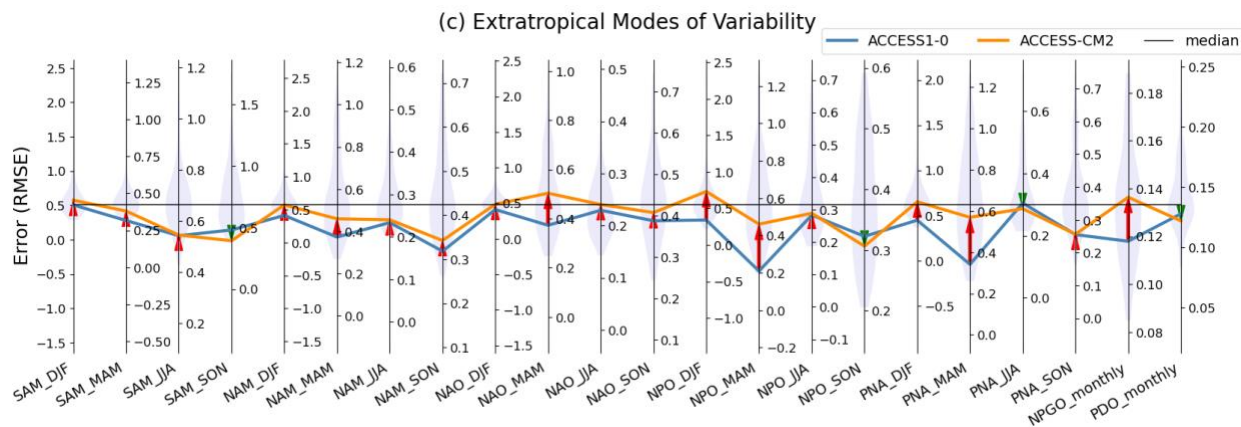
33



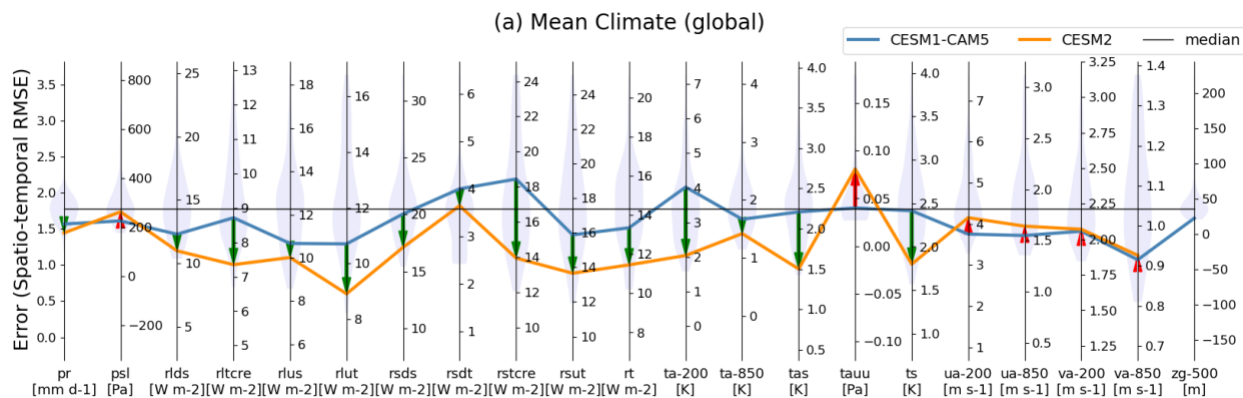
34



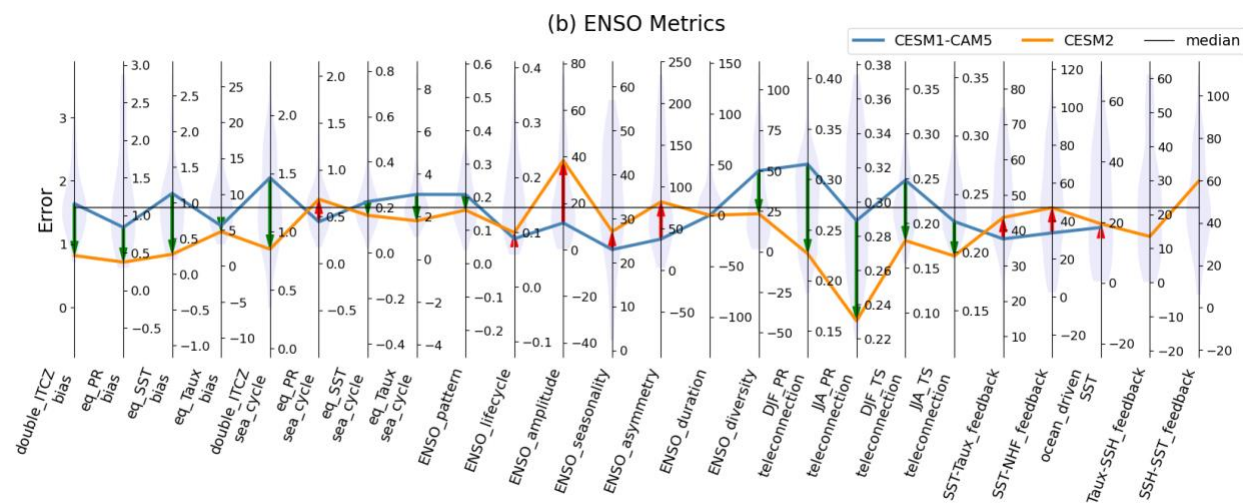
35



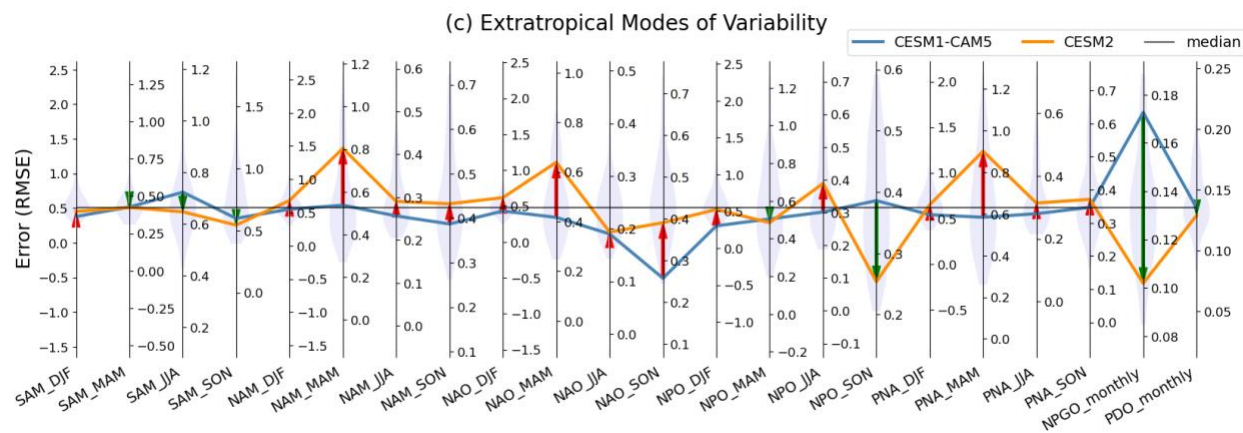
36 **Figure S1.** Parallel Coordinate Plot contrasting performance of two different versions of the
 37 ACCESS model (i.e., ACCESS-1-0 from CMIP5 and ACCESS-CM2 from CMIP6) in their
 38 Historical experiment for errors from (a) mean climate, (b) ENSO, and (c) extratropical modes of
 39 variability. Improvement (degradation) in the later version of the model is highlighted as a
 40 downward green (upward red) arrow between lines. Middle of each vertical axis is set to the
 41 median of the group of benchmarking models (i.e., CMIP5 and CMIP6), with the axis range
 42 stretched to maximum distance to either minimum or maximum from the median for visual
 43 consistency. The inter-model distributions of model performance are shown as shaded violin
 44 plots along each vertical axis.



45



46

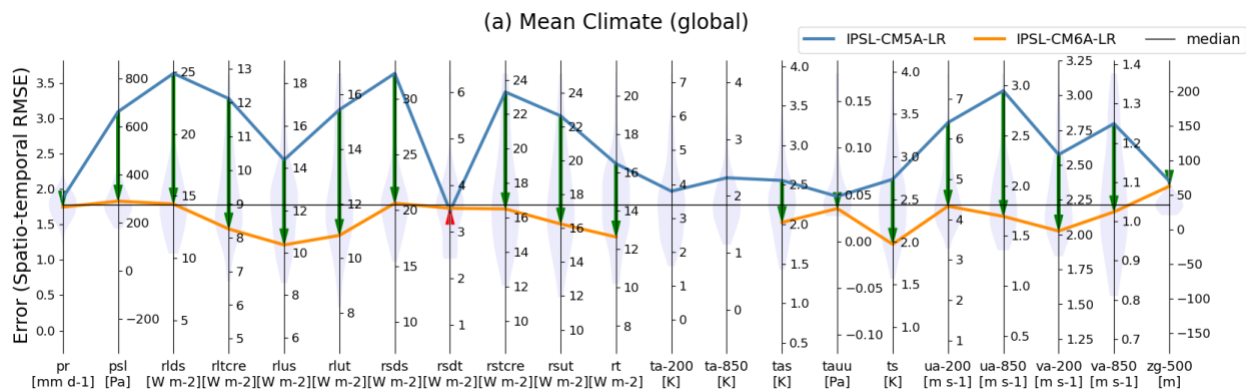


47

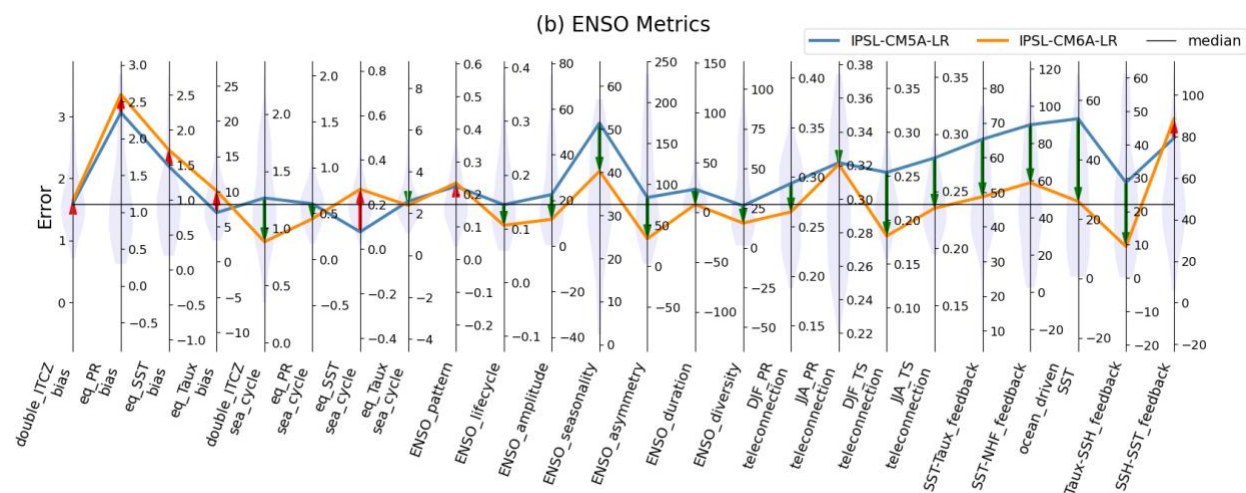
48 **Figure S2.** Same as Figure S1, but for CESM models (i.e., CESM1-CAM5 from CMIP5 and
 49 CESM2 from CMIP6)

50

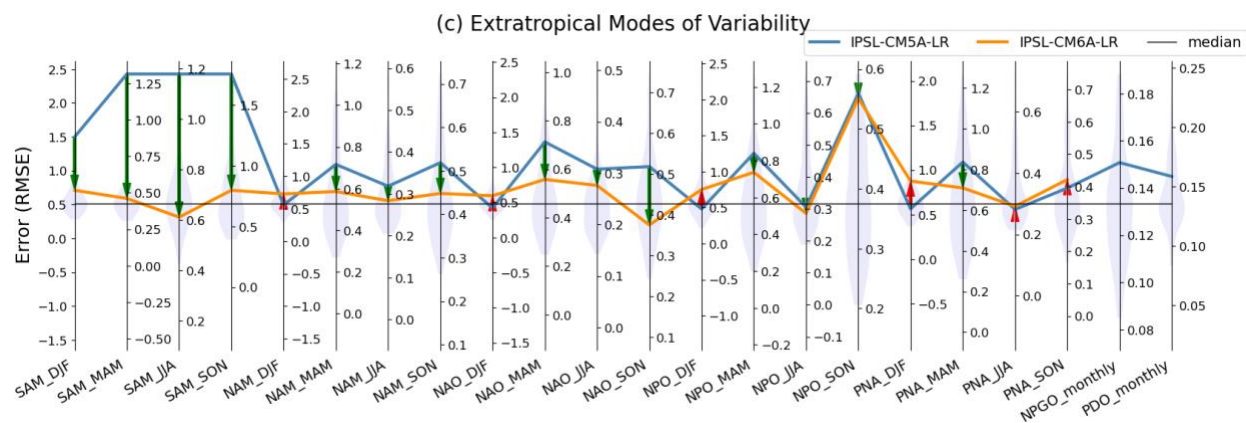
51



52



53



54 **Figure S3.** Same as Figure S1, but for IPSL models (i.e., IPSL-CM5A-LR from CMIP5 and
 55 IPSL-CM6A-LR from CMIP6)